

METLAM AUSTRALIA PRODUCT REFERENCE GUIDE



Commercial Washroom Accessories & Toilet Partition Hardware

Hinges

Effective 20 Jul 2025

METLAM AUSTRALIA CONTACT DETAILS

CUSTOMER SERVICE & HEAD OFFICE OPERATIONS

HEAD OFFICE

17 Parkers Road,
New Gisborne Vic 3438
T: 1300 METLAM
E: sales@metlam.com.au

INTERNATIONAL SALES

For international sales please email sales@metlam.com.au

AUSTRALIAN STATE & TERRITORY CONTACTS

COMMERCIAL MANAGER AUSTRALIA/NEW ZEALAND

Rachael Williams -Commercial Manager
Australia/New Zealand
T: 0407 863 730
E: rachael@metlam.com.au

SA & NT

Adam Seabrooke – State Manager
T: 0407 553 045
E: adam@metlam.com.au

NSW & ACT

Kurt Rose – State Manager
T: 0429 163 961
E: kurt@metlam.com.au

QLD

Craig Maguire – State Manager
T: 0419 506 049
E: craig@metlam.com.au

WA

Caterina Sharpe – State Manager
T: 0499 693 294
E: caterina@metlam.com.au

HINGES



MODA_GRAVITY_DESIGNER

Diecast Zinc Alloy ZP3
Brass Shaft, Nylon
Inserts, ABS Snap-On
Covers
Reversible Hold
Open/Hold Closed
Concealed Screw Fix or
Bolt Through
Available in Left Hand or
Right Hand - Please
Specify

Designer Black



MODA_GRAVITY_SCP

Diecast Zinc Alloy ZP3
Brass Shaft, Nylon
Inserts, ABS Snap-On
Covers
Reversible Hold
Open/Hold Closed
Concealed Screw Fix or
Bolt Through
Available in Left Hand or
Right Hand - Please
Specify

Satin Chrome Plate



MODA_GRAVITY_ANMB

Diecast Zinc Alloy ZP3
Brass Shaft, Nylon
Inserts, ABS Snap-On
Covers
Antimicrobial Coated
Reversible Hold
Open/Hold Closed
Concealed Screw Fix
Available in Left Hand or
Right Hand - Please
Specify

Antimicrobial



MODA_SPRING_SCP

Diecast Zinc Alloy ZP3
Brass Shaft, Nylon
Inserts, ABS Snap-On
Covers
Reversible Hold
Open/Hold Closed
Concealed Screw Fix or
Bolt Through
Liftoff Capability
Available in Left Hand or
Right Hand - Please
Specify

Satin Chrome Plate

HINGES



MODA_SPRING_DESIGNER

Diecast Zinc Alloy ZP3
Brass Shaft, Nylon
Inserts, ABS Snap-On
Covers
Reversible Hold
Open/Hold Closed
Concealed Screw Fix or
Bolt Through
Liftoff Capability
Available in Left Hand or
Right Hand - Please
Specify
Designer Black



MODA_SPRING_ANMB

Diecast Zinc Alloy ZP3
Brass Shaft, Nylon
Inserts, ABS Snap-On
Covers
Antimicrobial Coated
Reversible Hold
Open/Hold Closed
Concealed Screw Fix
Liftoff Capability
Available in Left Hand or
Right Hand - Please
Specify
Antimicrobial



106C_SCP

Diecast Zinc Alloy ZP3
Brass Shaft, Nylon
Inserts, ABS Snap-On
Covers
Concealed Screw Fix or
Bolt Through
Liftoff Capability
Available in Hold Open or
Hold Closed - Please
Specify
Available in Left Hand or
Right Hand - Please
Specify
Satin Chrome Plate



106C_ANMB

Diecast Zinc Alloy ZP3
Brass Shaft, Nylon
Inserts, ABS Snap-On
Covers
Antimicrobial Coated
Concealed Screw Fix or
Bolt Through
Liftoff Capability
Available in Hold Open or
Hold Closed - Please
Specify
Available in Left Hand or
Right Hand - Please
Specify
Antimicrobial

HINGES



106C_DESIGNER

Diecast Zinc Alloy ZP3
Brass Shaft, Nylon
Inserts, ABS Snap-On
Covers
Concealed Screw Fix or
Bolt Through
Liftoff Capability
Available in Hold Open or
Hold Closed - Please
Specify
Available in Left Hand or
Right Hand - Please
Specify

Designer Black



106

Diecast Zinc Alloy ZP3
#304 Grade Stainless
Steel Shaft
Concealed Screw Fix
Liftoff Capability
Available in Hold Open or
Hold Closed - Please
Specify
Available in Left Hand or
Right Hand - Please
Specify

Satin Chrome Plate



106B

Diecast Zinc Alloy ZP3
#304 Grade Stainless
Steel Shaft
Bolt Through
Liftoff Capability
Available in Hold Open or
Hold Closed - Please
Specify
Available in Left Hand or
Right Hand - Please
Specify

Satin Chrome Plate

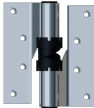


109

Brass
Concealed Screw Fix or
Bolt Through
Available In Hold Open or
Hold Closed - Please
Specify
Reversible Left
Hand/Right Hand

Satin Chrome Plate

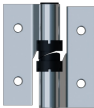
HINGES



206

#304 Grade Stainless Steel
Nylon Inserts
Screw Fix
Liftoff Capability
Available in Hold Open or Hold Closed - Please Specify
Available in Left Hand or Right Hand - Please Specify

Satin Stainless Steel



206B

#304 Grade Stainless Steel
Nylon Inserts
Bolt Through
Liftoff Capability
Available in Hold Open or Hold Closed - Please Specify
Available in Left Hand or Right Hand - Please Specify

Satin Stainless Steel



207C

#304 Grade Stainless Steel
Nylon Inserts, Stainless Steel Snap-On Covers
Screw Fix or Bolt Through
Liftoff Capability
Available in Hold Open or Hold Closed - Please Specify
Available in Left Hand or Right Hand - Please Specify

Stainless Steel



209

#304 Grade Stainless Steel
Screw Fix or Bolt Through
Reversible Left Hand/Right Hand

Satin Stainless Steel

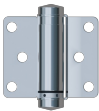
HINGES



301

Diecast Zinc Alloy ZP3
#304 Grade Stainless
Steel Shaft
Nylon Inserts, ABS Snap-On Covers
Concealed Screw Fix or Bolt Through
Liftoff Capability
Available in Hold Open or Hold Closed - Please Specify
Available in Left Hand or Right Hand - Please Specify

Satin Chrome Plate



209_DBLACT_SS

#304 Grade Stainless Steel
Spring Assisted
Allowance for both outward and inward opening
Returns door to the closed position
Adjustable tension
Screw Fix
Suitable for 13mm Board Only

Satin Stainless Steel



OL105

Diecast Zinc, Brass Shaft
Nylon Inserts, ABS Snap-On Covers
Screw Fix or Bolt Through
Lift Off
Available in Hold Open or Hold Closed - Please Specify
Available in Left Hand or Right Hand - Please Specify

Satin Chrome Plate



OL105-Spacer

Diecast Zinc

Satin Chrome Plate

HINGES



SENTINEL_HINGE

#304 Grade Stainless Steel
Nylon Inserts, Stainless Steel Snap-On Covers
Authentic Industrial Stainless Steel Finish
Concealed Screw Fix
Liftoff Capability
Available in Hold Open or Hold Closed - Please Simplify

Stainless Steel