

ML275BSM Surface Mounted Multi Function Dispenser

Material Specifications

- #304 Stainless Steel

Mounting

- Surface Mounted Concealed Fix

Dimensions

- 286mmW x 138mmH x 70mmD

Finish

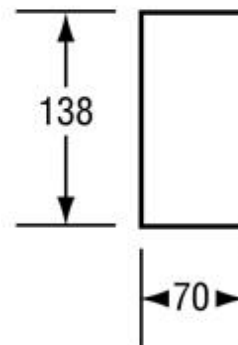
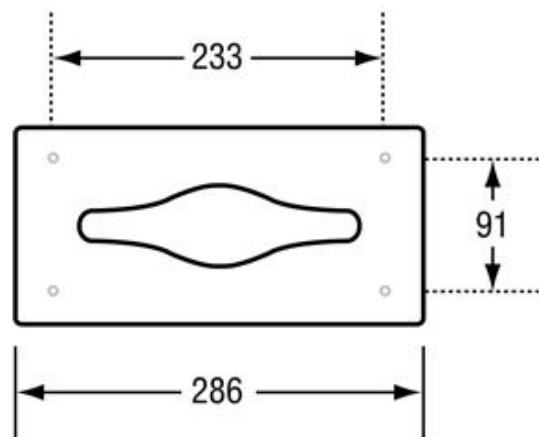
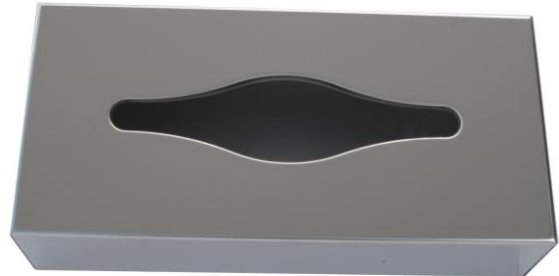
- Polished Stainless Steel

Installation Guidelines

- *These units are to be surface mounted and may be subject to Australian Building Code Regulations for height location and for able bodied and/or disabled use.*
1. Determine appropriate height and location by using the internal located fixing holes.
 2. Mark and drill holes into the wall, fit anchors if necessary.
 3. Fasten unit to the wall with appropriate fixings.
 4. Test the open/close mechanism for ease of operation to complete installation.

Features

- Dispenses Facial Tissues or Hygienic Gloves
- **Facial Tissues:** 300 single ply or 150 double ply
- **Gloves:** Subject to supplier availability



The technical recommendations contained in this document are necessarily of a general nature and should not be relied on for specific applications without first securing competent advice. Whilst Metlam Australia Pty Ltd has taken all reasonable steps to ensure the information contained herein is accurate and current, it does not warrant the accuracy or completeness of the information and does not accept liability for errors or omissions. Any Commercial product should only be installed by a competent tradesperson and serviced/maintained by knowledgeable janitorial staff or competent people. Metlam Australia accepts no responsibility for any damage to product, walls or fixtures due to incorrect installation or maintenance of any of their products.

The photographs and line drawings of the products presented above are representational only.
Metlam Australia Pty Ltd reserves the right to, and from time to time, make changes and improvements in design and dimensions.